









We Are An IAS AC472 Accredited Facility.

## Pinnacle Standard Colors

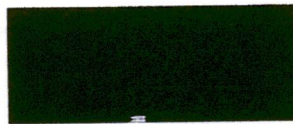
26 Gauge PBR • Siliconized Polyester ("SP")



HAWAIIAN BLUE SR .32/SRI 35



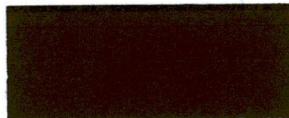
CRIMSON RED SR .33/SRI 34



EVERGREEN SR .31/SRI 31



BURNISHED SLATE SR .28/SRI 29



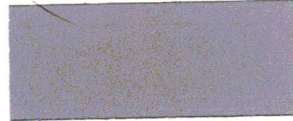
KOKO BROWN SR .28/SRI 30



AZTEC GOLD SR .53/SRI 63



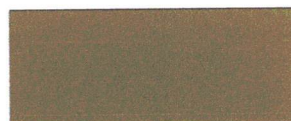
CHARCOAL GRAY SR .28/SRI 30



ASH GRAY SR .48/SRI 56



SADDLE TAN SR .48/SRI 56



DESERT SAND SR .42/SRI 48



\*POLAR WHITE SR .60/SRI 71



RUSTIC RED SR .36/SRI 40



LIGHT STONE SR .50/SRI 58



COLONY GREEN SR .36/SRI 40



GALLERY BLUE SR .28/SRI 30



GALVALUME PLUS SR .77/SRI 72

26 gauge material available in all colors • 29 gauge material only available in Polar White, Rustic Red, Desert Sand, Light Stone, Ash Gray, Evergreen, Galvalume and Burnished Slate

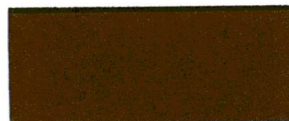
• 20 year limited warranty available upon written request except for Crimson Red (3/5 year warranty)

• For warranty information outside the continental United States, please inquire \*Polar White is a Straight Polyester

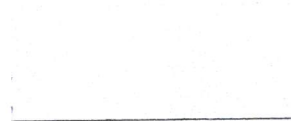
## Kynar®

Kynar 500 \*24 or \*26 Gauge Material for PBR Panels

Pinnacle U-Dek, D-Lok, Batten-Lok and Super-Lok Available in 24 Gauge Kynar® 500



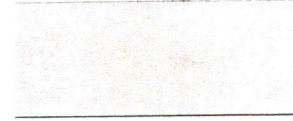
MEDIUM BRONZE SR .33/SRI 36



SNOW WHITE SR .65/SRI 79



SLATE GRAY SR .37/SRI 41



ALMOND SR .63/SRI 76



CLASSIC GREEN SR .28/SRI 30



BROWNSTONE SR .47/SRI 54



BRITE RED SR .49/SRI 55



HARBOR BLUE SR .28/SRI 30

Please note that the Kynar colors are available at an extra cost.

20 year limited warranty available upon written request. For warranty information outside the continental United States, please inquire.



STRUCTURES, INC.

2665 Hwy. 321 Bypass  
P.O. Box 1268  
Cabot, AR 72023

Phone 501/941-3929  
800/201-1534  
Fax 501/941-2675

[www.pinnaclestructures.com](http://www.pinnaclestructures.com)

### Commercial - Industrial Colors

All products available in smooth finish. Trim in 24 Gauge Material available in Kynar Only & 26 Gauge Material available in Kynar or SP. Final selection should be made from actual color chips.

All colors shown except Crimson Red contain not more than .06 percent lead. Use this color only for applications which comply with federal, state and local regulations for lead-based paint.



WE SELL  
ENERGY STAR





# Madison County

MISSISSIPPI

